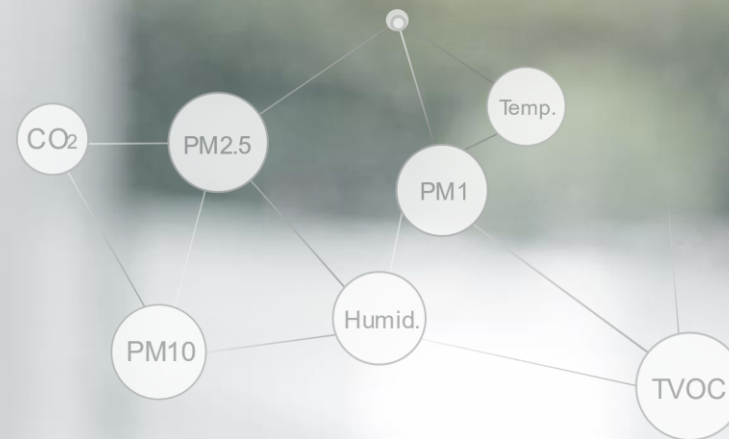


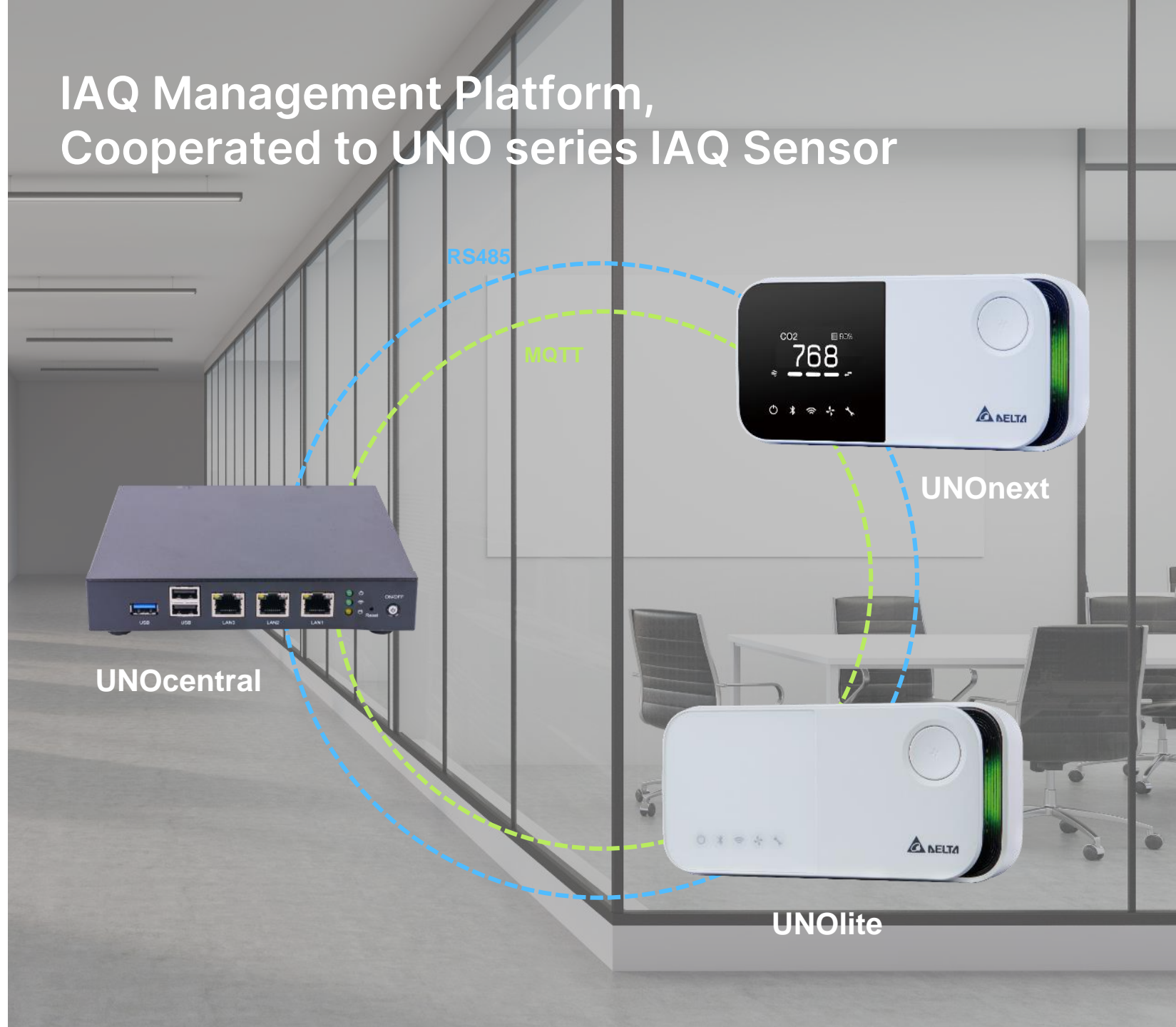
# UNOcentral Solutions



# UNOcentral

- Up to 16 UNOnext or 32 UNOLite connecting via Modbus RTU
- Up to 32 UNOnext/UNOLite connecting via MQTT
- Access status and data points locally and remotely
- Directly display dashboard on the screen via HDMI output
- Carousel mode display for multiple UNOnext/UNOLite
- Control UNOnext linked ventilation equipment
- Work perfectly in local network without Cloud

## IAQ Management Platform, Cooperated to UNO series IAQ Sensor



# Advantages of UNOcentral



## Visualization

Globalview  
Signage  
Trend



## Data Mgt.

Data Storage (3yrs)  
Device Management



## Control

Smart Control  
Threshold Settings  
Scheduling  
Central Lock



## Event Alert

Poor IAQ Event  
Maintenance Event  
Abnormal Event

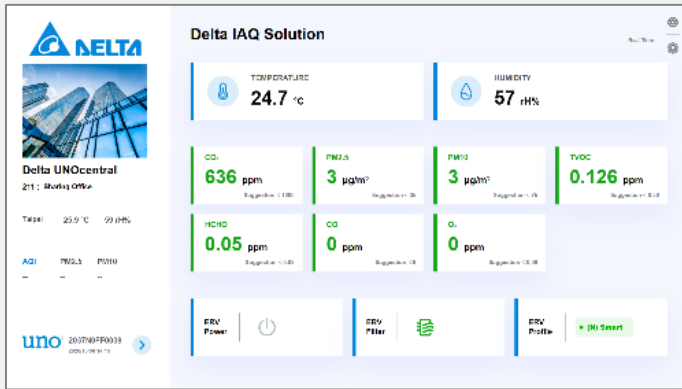


## Integration

BACnet IP  
HTTP API  
MQTT Protocol  
Web Embedding

# Various Visual Value-added Options

## Lobby, Rest Area



### Digital Signage

- HDMI output directly
- Visualization management interface
- IAQ awareness met WELL certification

## Central Control Room



### Management Platform

- Historical data chart
- 3 years data storage
- Max. 16 / 32 UNO series IAQ sensors
- Manual / Automatic / Schedule Ventilation Control
- Integrate into existed BA system (BACnet IP or etc.)

## Office, Conference Room



### LPAD 7 Panel

- On-site monitoring and management
- Integrates and displays data from multiple detectors by BACnet IP / MQTT or etc.

# Globalview of UNOcentral to Monitor Plural UNOnext

Client Logo / String  
Can be modified



Delta IAQ Solution

Smart Building

Last Update - 2022/12/27 10:18:44 (Real-Time)

North/Taipei City/Jh ...  
19.3 °C 96 rH% AQI 42 PM2.5 10 PM10 18

UNOcentral Alias  
Can be modified

ID : Alias

Status

Temp.

Humi.

CO<sub>2</sub>

PM2.5

PM10

TVOC

HCHO

CO

O<sub>2</sub>

ERV Power

ERV Filter

ERV Profile

Suggestion

°C

rH%

≤ 1000ppm

≤ 35µg/m<sup>3</sup>

≤ 75µg/m<sup>3</sup>

≤ 0.56ppm

≤ 0.08ppm

≤ 9ppm

≤ 0.06ppm

Digital Center



20.7

76

561

2

2

N/A

N/A

N/A

N/A



• (N) Smart

Room 2B01



20.6

76

528

2

1

N/A

N/A

N/A

N/A



• (N) Smart

Room 2B02



21.3

73

530

1

1

N/A

N/A

N/A

N/A



• (N) Smart

WELL Office



22

65

539

2

1

0.512

0.033

0

0



• (N) Smart

Room 2B10



21.2

76

698

2

1

N/A

N/A

N/A

N/A



• (N) Smart

Reset Room



22

69

458

1

1

N/A

N/A

N/A

N/A



• (N) Smart

Outdoor Information  
Retrieved by Open  
Data API

UNOcentral Settings  
Open setting dialog

Language Switch

Status of linked  
ventilation  
Power/Filter/Profile

Sensor combination  
Based on UNO sensor  
model

UNOnext Alias  
Can be modified  
Open operation dialog

Entry for UNOnext signage



# Signage of UNOcentral to Monitor One UNOnext

Client Logo / String  
Can be modified

UNOcentral Picture & Alias  
Can be modified

UNOnext Alias  
Can be modified

Outdoor Information  
Retrieved by Open Data API

**Delta IAQ Solution**

Last Update - 2022/12/07 10:20:07 (Real-Time)

TEMPERATURE 22 °C	HUMIDITY 65 rH%		
CO <sub>2</sub> 541 ppm Suggestion < 1000	PM2.5 1 µg/m <sup>3</sup> Suggestion < 35	PM10 1 µg/m <sup>3</sup> Suggestion < 75	TVOC 0.502 ppm Suggestion < 0.56
HCHO 0.033 ppm Suggestion < 0.08	CO 0 ppm Suggestion < 9	O <sub>3</sub> 0 ppm Suggestion < 0.06	

ERV Power | ERV Filter | ERV Profile | (N) Smart

UNOnext Dialog  
Open operation dialog

Language Switch

Sensor combination  
Based on UNO sensor model

Status of linked ventilation  
Power/Filter/Profile

Return to Globalview



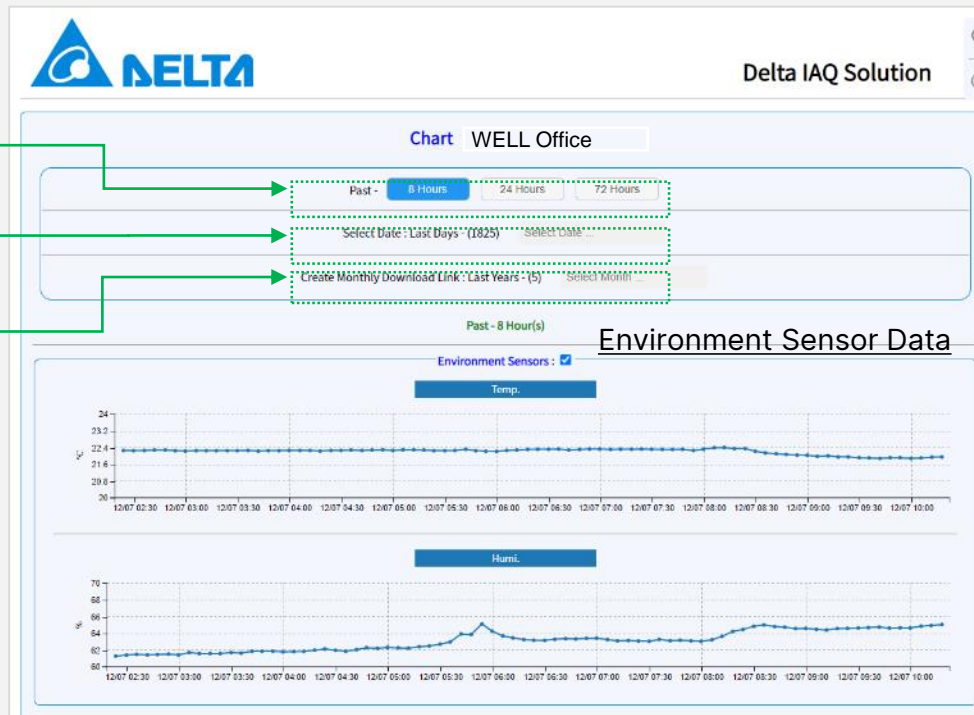
# Historical Data - Browse and Download

- Display past 8H/24H/72H data. Average data are calculated on IAQ sensor data.
- Choose one day and display the data of past 3 days of the day, e.g. 11/01~11/03.
- Download one month data in recent 3 years.
- Display the linked ventilation equipment on / off.

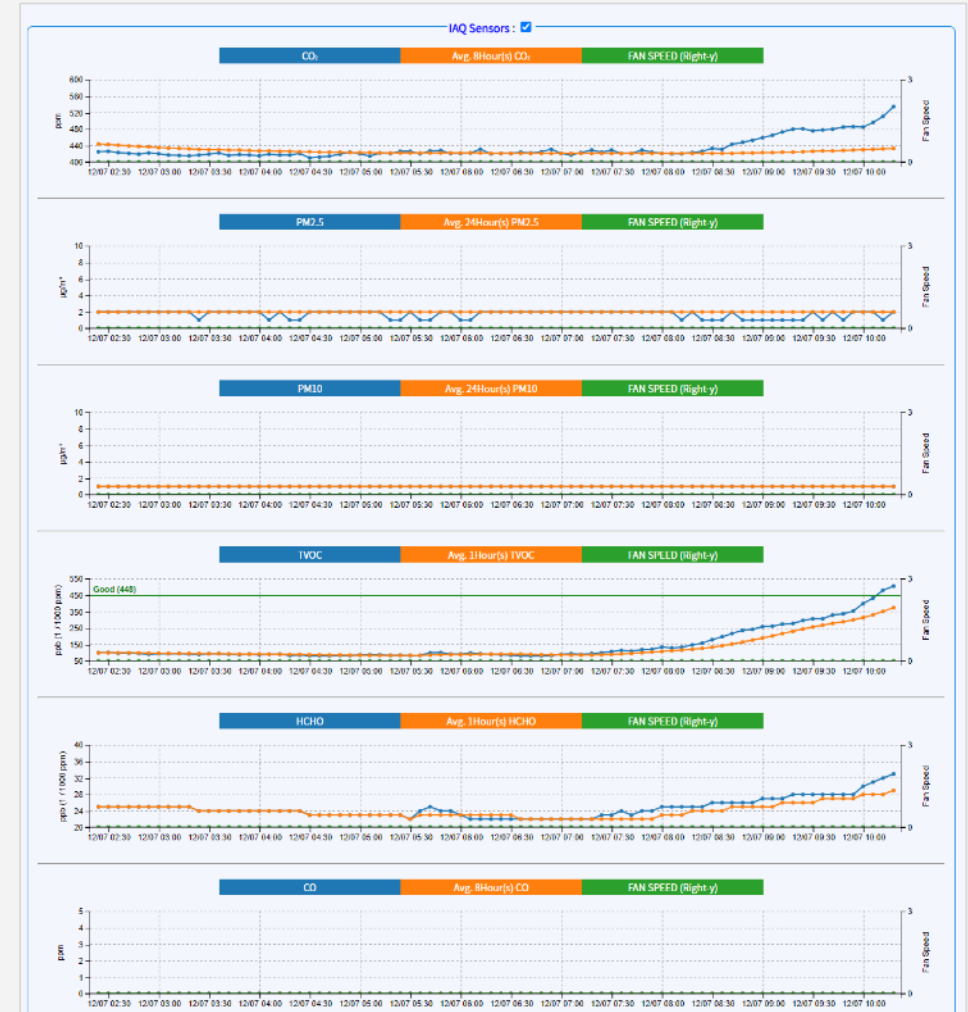
Display Past Hours Data

Select Date to Display Data

Download Monthly Data



## IAQ Sensor Data



# Appendix: Features & Specifications



- Pre-installed web-based management application, UNO Control Server (UCS)
- Up to 16/32 UNOnext or UNOlite connecting via RS485 over Modbus RTU, or MQTT and access status and data points locally and remotely
- Directly display dashboard on the screen via HDMI output
- Carousel mode display for multiple UNOnext/UNOlite
- Control UNOnext linked ventilation equipment, provide central locking
- Calendar based scheduling control
- Alarming, event-driven Email and LINE notification
- Trending chart, 300,000 sets / 3 yrs historical data archiving
- Supported BACnet IP and HTTP API for developers and system integrators
- Work perfectly in local network without Cloud

I/O	
Display	1x HDMI Output with 1920x1080 Resolution
Ethernet *	10/100/1000 Mbps, 3x RJ45
I/O *	2x RS-232/485, D-Sub9 Male
	4x DI, 4x DO
	USB 2.0 2x Type A
	USB 3.0 1x Type A
Power Adapter	1x Power On/Off Button
	Power and Storage Access LED
	AC to DC, AC 90 to 240 V AC Input, DC 12VDC/3A 36W

Physical and Environment	
Vibration	IEC 60068-3-64, 0.5Grms, Random 5~500 Hz, 40 Mins/Axis
Operating Temperature	0°C~50°C
Operating Humidity	5%~95% (Non-condensing)
Storage Temperature	-20°C~70°C
Dimensions (W x H x D)	164.5 mm x 30 mm x 143 mm (6.48" x 1.18" x 5.63")
Weight	0.9 Kg

Certifications	
Certifications	CE/FCC, Class A

\* Ethernet and I/O are not all used in UNOcentral Software. Please refer to user manual.



# Appendix: UNOcentral Software Details

Features	UNOcentral
Payment Options	One-Time Buyout
Global Network	With UNOweb (Free Account)
Signage Globalview	Update per 5s Login-free
Data Storage	Up to 3yrs, 1 record per 6min.
Historical Data Chart	1 record per 6min 3 days continuously data in 3yrs
Historical Data Download	1 record per 6min 1 month continuously data in 3yrs
Download Limitation	No Limit
UNOnext Management	Web management UNOnext Control (Manual/Auto/Schedule) Threshold for auto control Event notification ...
3rd party Integration	BACnet IP HTTP API MQTT Protocol Web Embedding



To learn more about Delta Building Solutions,  
please visit <https://buildings.deltaww.com/>  
or scan the QR code

Learn More from  
[YouTube Channels](#)

